

AQA 8700
 Paper 1– Explorations in Creative Reading and Writing (50%) [1hr45]
 Paper 2 – Writers' Viewpoints and Perspectives (50%) [1hr45]
 NEA – Spoken Language Endorsement

AQA 8702
 Paper 1– Shakespeare and the 19th century novel (40%) [1hr45]
 Paper 2 – Modern texts and poetry (60%) [2hr15]

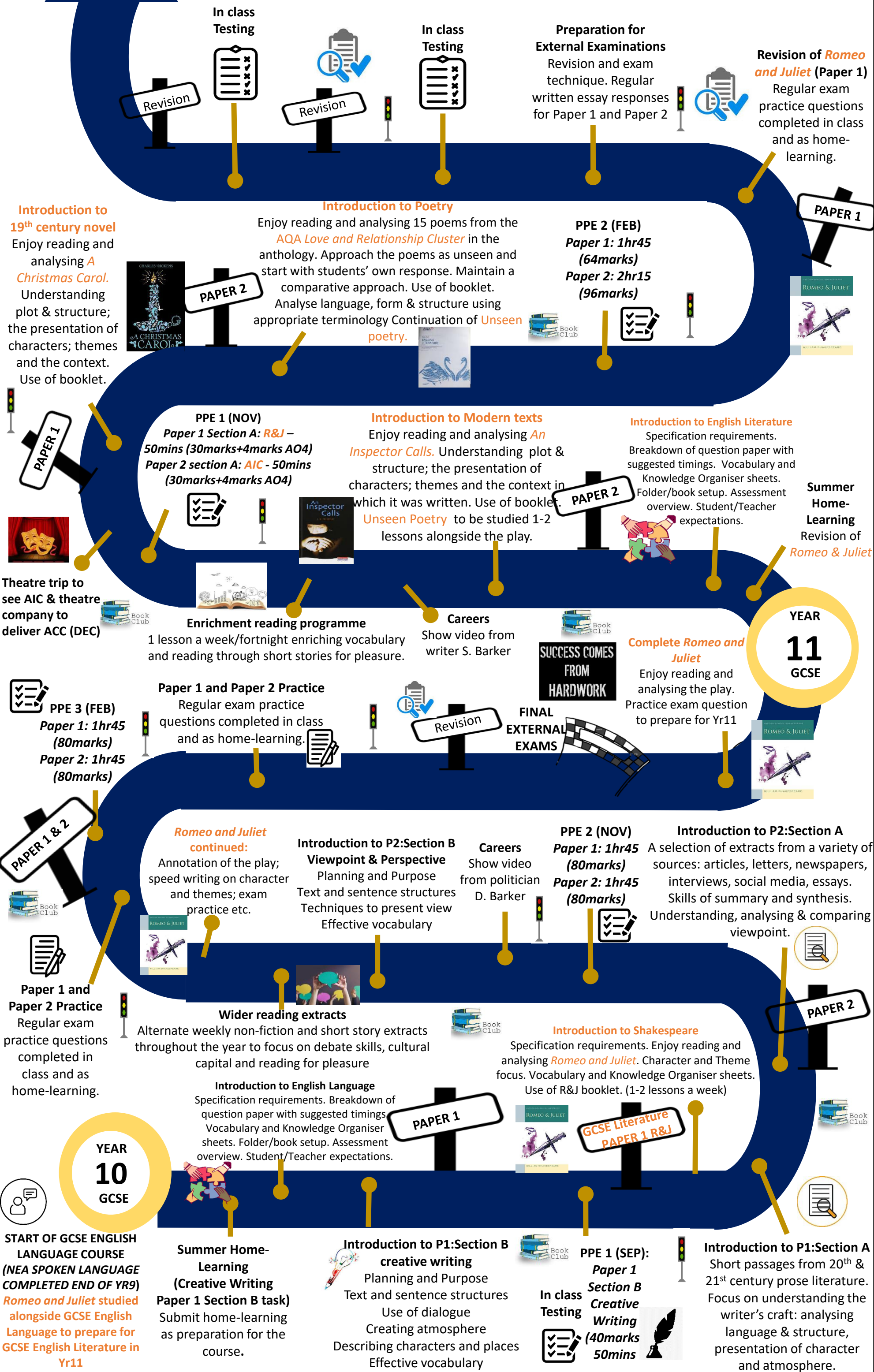
GCSE English Language and GCSE English Literature LEARNING JOURNEY

Curriculum intent: to be skilled communicators, readers and writers; to possess an enquiring mind; to have cultural capital and can connect texts to the wider world.

SUCCESS COMES FROM HARDWORK

= Intervention/Enrichment (before school, after school and some Saturday sessions throughout the academic year.)
 = KS4 Book Club

FINAL EXTERNAL EXAMS



Revision
 In class Testing

Introduction to 19th century novel
 Enjoy reading and analysing *A Christmas Carol*. Understanding plot & structure; the presentation of characters; themes and the context. Use of booklet.



PAPER 2

Introduction to Poetry
 Enjoy reading and analysing 15 poems from the AQA *Love and Relationship Cluster* in the anthology. Approach the poems as unseen and start with students' own response. Maintain a comparative approach. Use of booklet. Analyse language, form & structure using appropriate terminology Continuation of *Unseen poetry*.

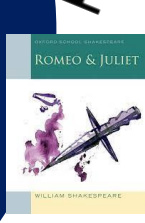


PPE 2 (FEB)
 Paper 1: 1hr45 (64marks)
 Paper 2: 2hr15 (96marks)



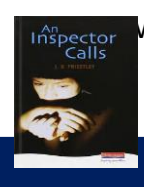
Revision of *Romeo and Juliet* (Paper 1)
 Regular exam practice questions completed in class and as home-learning.

PAPER 1



PAPER 1
 Theatre trip to see AIC & theatre company to deliver ACC (DEC)

PPE 1 (NOV)
 Paper 1 Section A: *R&J* – 50mins (30marks+4marks AO4)
 Paper 2 section A: *AIC* - 50mins (30marks+4marks AO4)



Introduction to Modern texts
 Enjoy reading and analysing *An Inspector Calls*. Understanding plot & structure; the presentation of characters; themes and the context in which it was written. Use of booklet. *Unseen Poetry* to be studied 1-2 lessons alongside the play.

PAPER 2

Introduction to English Literature
 Specification requirements. Breakdown of question paper with suggested timings. Vocabulary and Knowledge Organiser sheets. Folder/book setup. Assessment overview. Student/Teacher expectations.

Summer Home-Learning
 Revision of *Romeo & Juliet*

PPE 3 (FEB)
 Paper 1: 1hr45 (80marks)
 Paper 2: 1hr45 (80marks)

Paper 1 and Paper 2 Practice
 Regular exam practice questions completed in class and as home-learning.

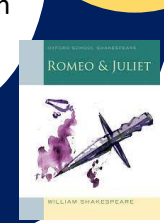
Revision

FINAL EXTERNAL EXAMS

SUCCESS COMES FROM HARDWORK

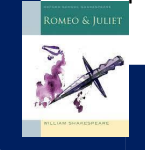
Complete *Romeo and Juliet*
 Enjoy reading and analysing the play. Practice exam question to prepare for Yr11

YEAR 11 GCSE



PAPER 1 & 2
 Paper 1 and Paper 2 Practice
 Regular exam practice questions completed in class and as home-learning.

***Romeo and Juliet* continued:**
 Annotation of the play; speed writing on character and themes; exam practice etc.



Introduction to P2:Section B Viewpoint & Perspective
 Planning and Purpose
 Text and sentence structures
 Techniques to present view
 Effective vocabulary

Careers
 Show video from politician D. Barker

PPE 2 (NOV)
 Paper 1: 1hr45 (80marks)
 Paper 2: 1hr45 (80marks)

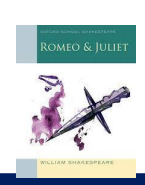
Introduction to P2:Section A
 A selection of extracts from a variety of sources: articles, letters, newspapers, interviews, social media, essays. Skills of summary and synthesis. Understanding, analysing & comparing viewpoint.

PAPER 1
 Wider reading extracts
 Alternate weekly non-fiction and short story extracts throughout the year to focus on debate skills, cultural capital and reading for pleasure

Introduction to English Language
 Specification requirements. Breakdown of question paper with suggested timings. Vocabulary and Knowledge Organiser sheets. Folder/book setup. Assessment overview. Student/Teacher expectations.

PAPER 1

Introduction to Shakespeare
 Specification requirements. Enjoy reading and analysing *Romeo and Juliet*. Character and Theme focus. Vocabulary and Knowledge Organiser sheets. Use of R&J booklet. (1-2 lessons a week)



GCSE Literature PAPER 1 R&J

YEAR 10 GCSE

START OF GCSE ENGLISH LANGUAGE COURSE (NEA SPOKEN LANGUAGE COMPLETED END OF YR9)
Romeo and Juliet studied alongside GCSE English Language to prepare for GCSE English Literature in Yr11

Summer Home-Learning (Creative Writing Paper 1 Section B task)
 Submit home-learning as preparation for the course.

Introduction to P1:Section B creative writing
 Planning and Purpose
 Text and sentence structures
 Use of dialogue
 Creating atmosphere
 Describing characters and places
 Effective vocabulary

PPE 1 (SEP): Paper 1 Section B Creative Writing (40marks 50mins)

Introduction to P1:Section A
 Short passages from 20th & 21st century prose literature. Focus on understanding the writer's craft: analysing language & structure, presentation of character and atmosphere.